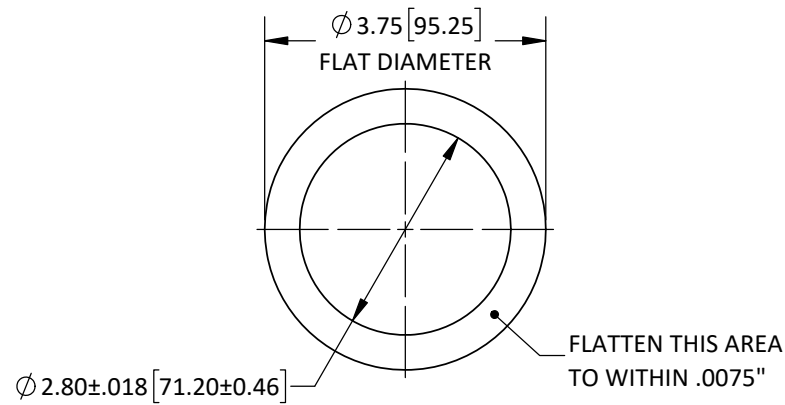
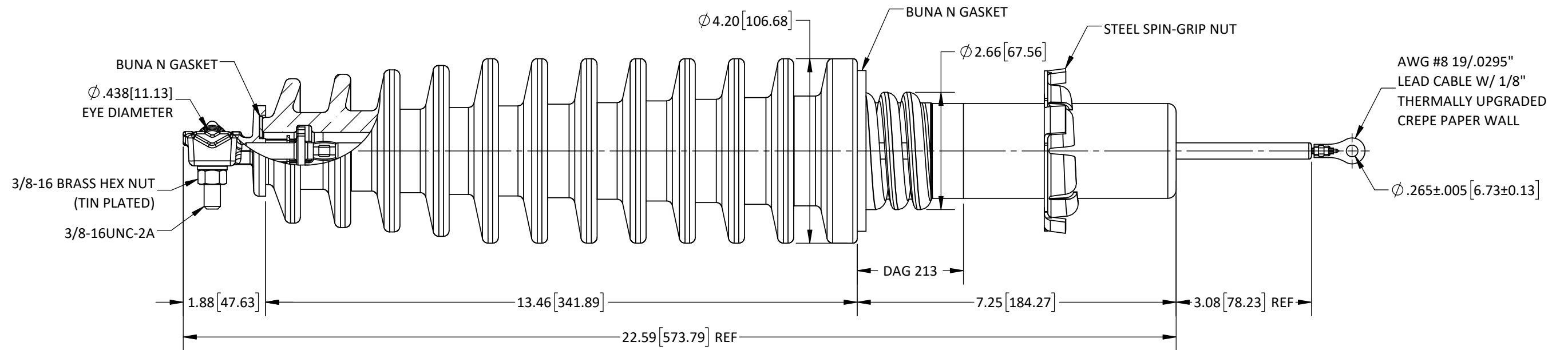
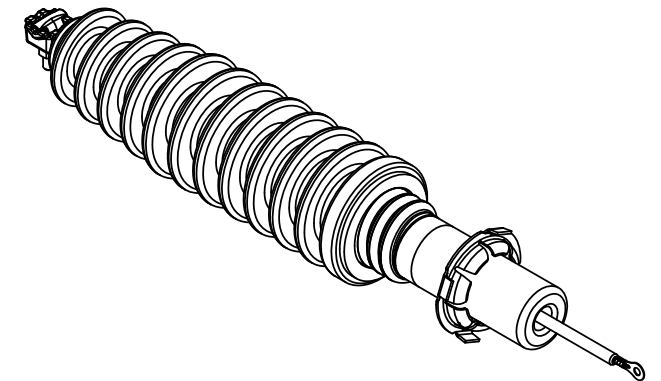


REVISIONS					
REV.	DATE	ECN #	DESCRIPTION	BY	APP'D
1	4/12/2022	HJ22-052	RATED VOLTAGE WAS 18kV	CLS	JG



**H.V. COVER HOLE DIMENSIONS  
DETAIL**



- PORCELAIN NOTES:**
1. WET PROCESS ELECTRICAL PORCELAIN.
  2. GREY GLAZE MUNSELL 5BG 7.0/0.4
  3. TOLERANCE  $\pm 3\%$  WITH NOTHING LESS THAN  $\pm .03"$ .

- SPECIFICATIONS:**
1. RATED VOLTAGE ..... 25kV
  2. BASIC IMPULSE LEVEL ..... 150kV
  3. NOMINAL CURRENT RATING ..... 75 AMPS @ 1000A/SQ.-IN.
  4. STRIKE DISTANCE ..... 13.80" [350.52mm]
  5. CREEP DISTANCE (MIN) ..... 30.50" [774.70mm]
  6. APPROXIMATE WEIGHT ..... 9.8 LBS

**PROPRIETARY AND CONFIDENTIAL**  
 THE INFORMATION CONTAINED IN THIS DRAWING IS THE SOLE PROPERTY OF H-J ENTERPRISES, INC. ANY REPRODUCTION IN PART OR AS A WHOLE WITHOUT THE WRITTEN PERMISSION OF H-J ENTERPRISES, INC. IS PROHIBITED.

TOLERANCES (EXCEPT AS NOTED)	
DECIMAL	$\pm .032" / .8mm$
FRACTIONAL	$\pm$
ANGULAR	$\pm 2^\circ$



<b>H - J ENTERPRISES, INC.</b>			
3010 HIGH RIDGE BLVD. HIGH RIDGE, MO. 63049 USA PHONE 1-636-677-3421 FAX 1-636-376-1915			
<b>25kV 150kV BIL HV (EXT CREEP) BUSHING ASSY W/ CONDUCTIVE DAG</b>			
MATERIAL (SEE DRAWING)			
CHK'D	CJT	APP'D	5/06/16
DRAWN BY		DATE	DRAWING NO.
TJF		5/06/16	AS1208-054
SCALE		N.T.S.	